

# 450 West Hanes Mill Road

Winston-Salem, NC 27105

*Beautifully-landscaped corporate campus  
Up to 30,000 SF of office-space available  
Easy access via HWY 52 and I-74  
Generous parking and tenant improvements*

**Contact:**

**Cameron Lambe Gilmore**  
camlambegilmore@gmail.com  
336.413.2712

Contact:  
**Cameron Lambe Gilmore**  
 camlambegilmore@gmail.com  
 336.413.2712

# Highlights

- Convenient location with nearby highway access
- 6 parking spaces/1000 ft
- All services provided, including utilities and janitorial
- Conference rooms and kitchens available
- 24/7 access and conditioning



**Great location**



**Tenant amenities**

Suites 220-249    Hanes Mill Executive Suites

Suite

221

222 American View Global Logistics, Inc. (hallway)

223 Triad First In Families (hallway)

Suite

235 Logan Financial Solutions, Inc.

236 NC Association of Fire Chiefs

238 Spencer Counseling and Wellness, PC

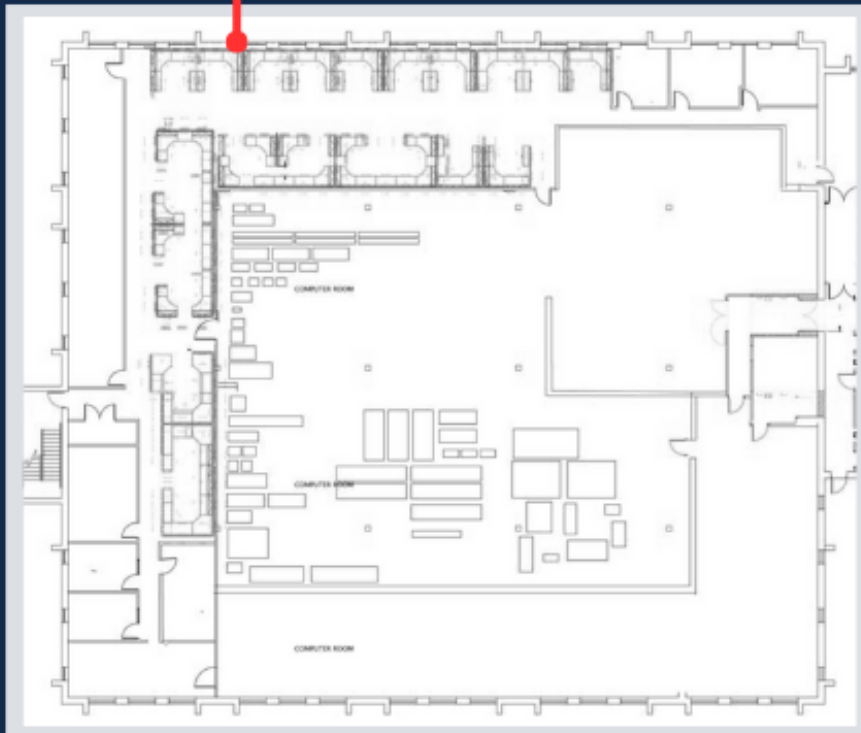
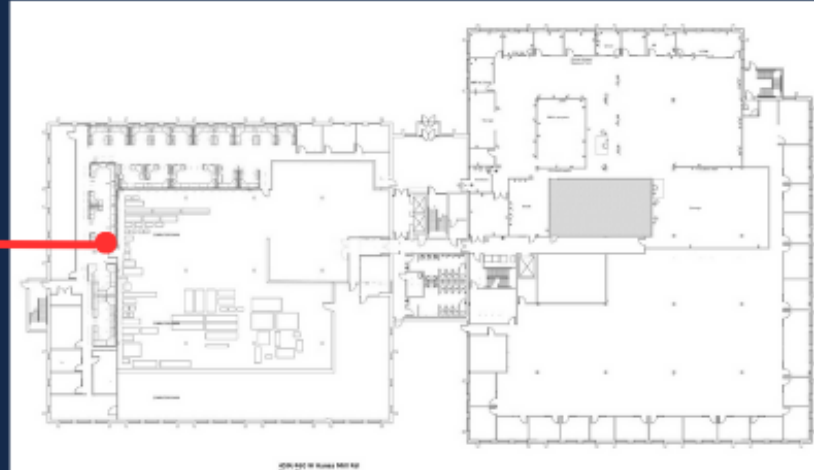
239 Healing Tree of Morality

**24/7 access**

# 450 West Hanes Mill

## First Floor

Contact:  
Cameron Lambe Gilmore  
camlambegilmore@gmail.com  
336.413.2712



### First Floor

- 21,000 SF general office space
- Easily divisible into smaller suites
- New paint, flooring, and LED lighting to be installed
- Building reception and security
- Previously used as data center
- Renovated common spaces
- 6 parking spots/1000 SF



# 450 West Hanes Mill

## Executive Suites - Additional Information

Contact:  
Cameron Lambe Gilmore  
camlambegilmore@gmail.com  
336.413.2712

- Office suites and open floorplans within corporate campus
- 24/7 access and conditioning, natural and LED lighting
- Multiple conference rooms and kitchen areas available for use
- Scenic patio overlook behind building
- 6 parking spots/1000 SF



Conference rooms available  
by reservation



Beautiful landscaping and  
patio area



Natural light and quiet  
working environment

# 450 W. Hanes Mill Rd

**Contact:**  
**Cameron Lambe Gilmore**  
camlambe@gmail.com  
336.413.2712

